

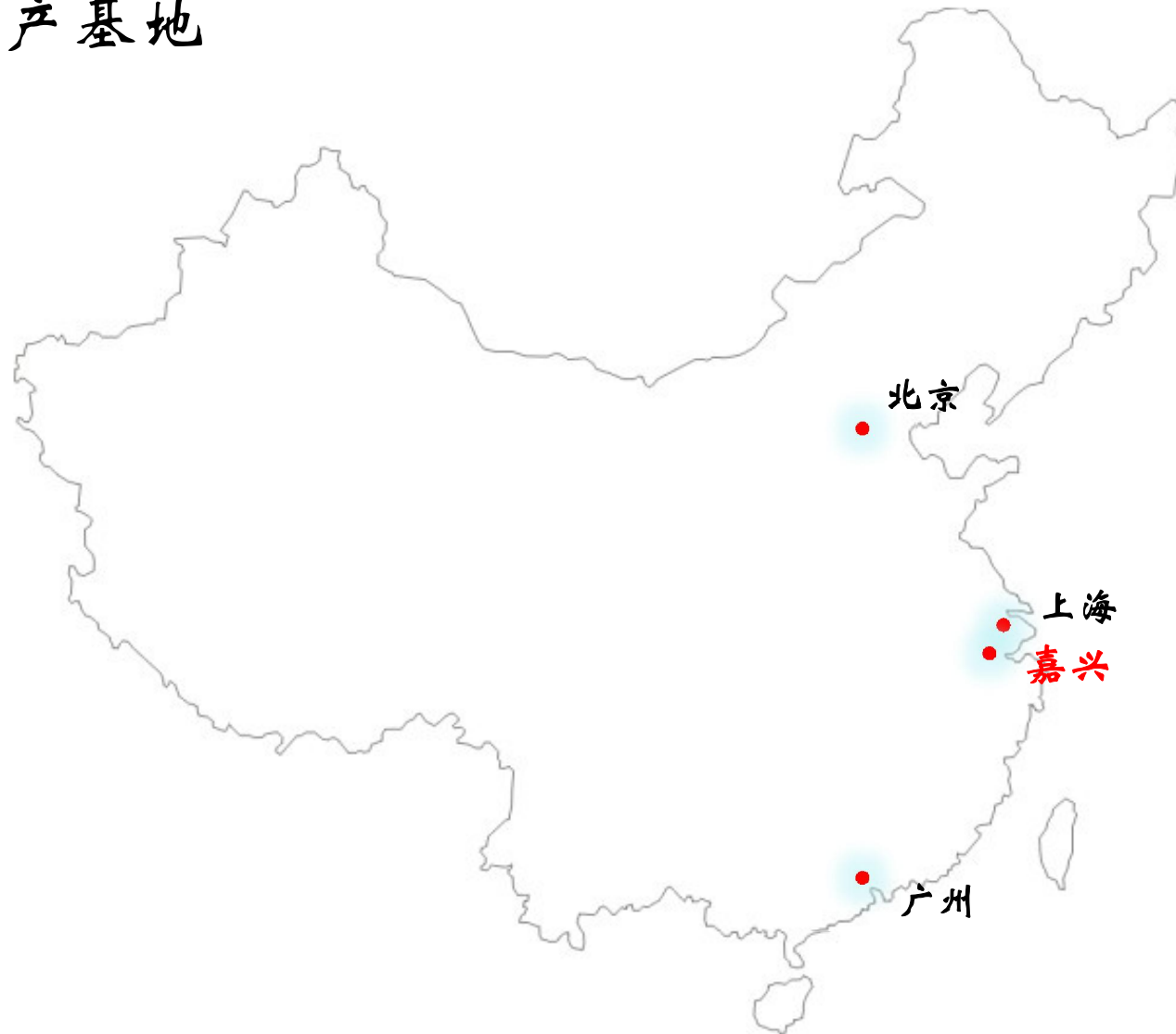


浙江震寰汽保设备有限公司

全景图



生产基地



发展历程

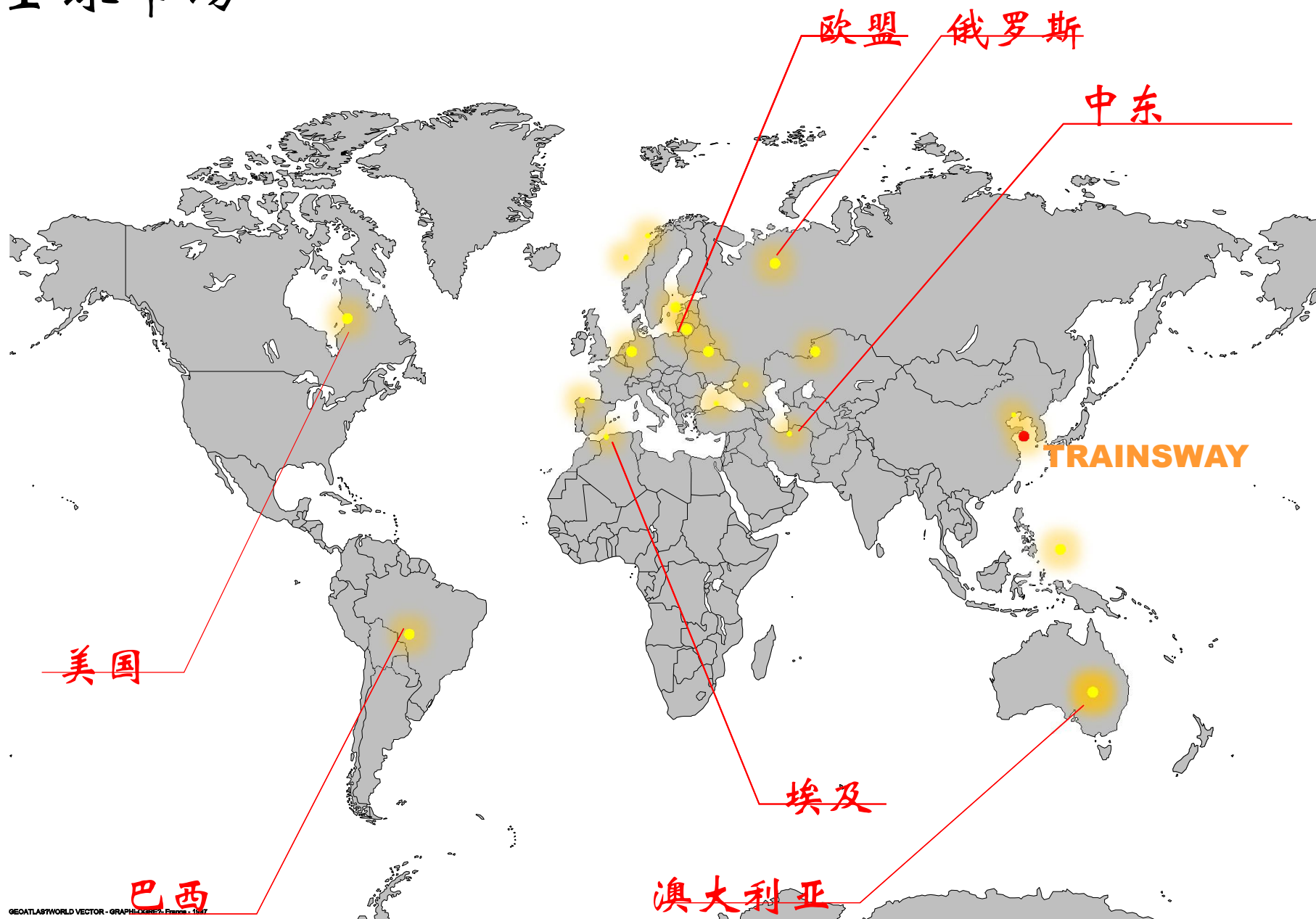
- **1991年:**在浙江省温州市成立温州震寰汽保设备有限公司
- **1997年:**生产出第一台轮胎拆装机，成为中国最早生产轮胎拆装机的厂家之一
- **1998年:**开始生产轮胎平衡机
- **2004年:**开始出口欧洲
- **2005年:**开始出口到世界各地: 美国/中东/东南亚/澳洲/俄罗斯/埃及等
- **2006年:**通过欧盟CE认证
- **2007年:**公司搬迁到浙江省嘉兴市，更名为浙江震寰汽保设备有限公司
- **2008年:**通过ISO9001质量管理体系认证

欧洲市场



- 荷兰
- 德国
- 瑞典
- 波兰
- 英国
- 土耳其
- 西班牙

全球市场



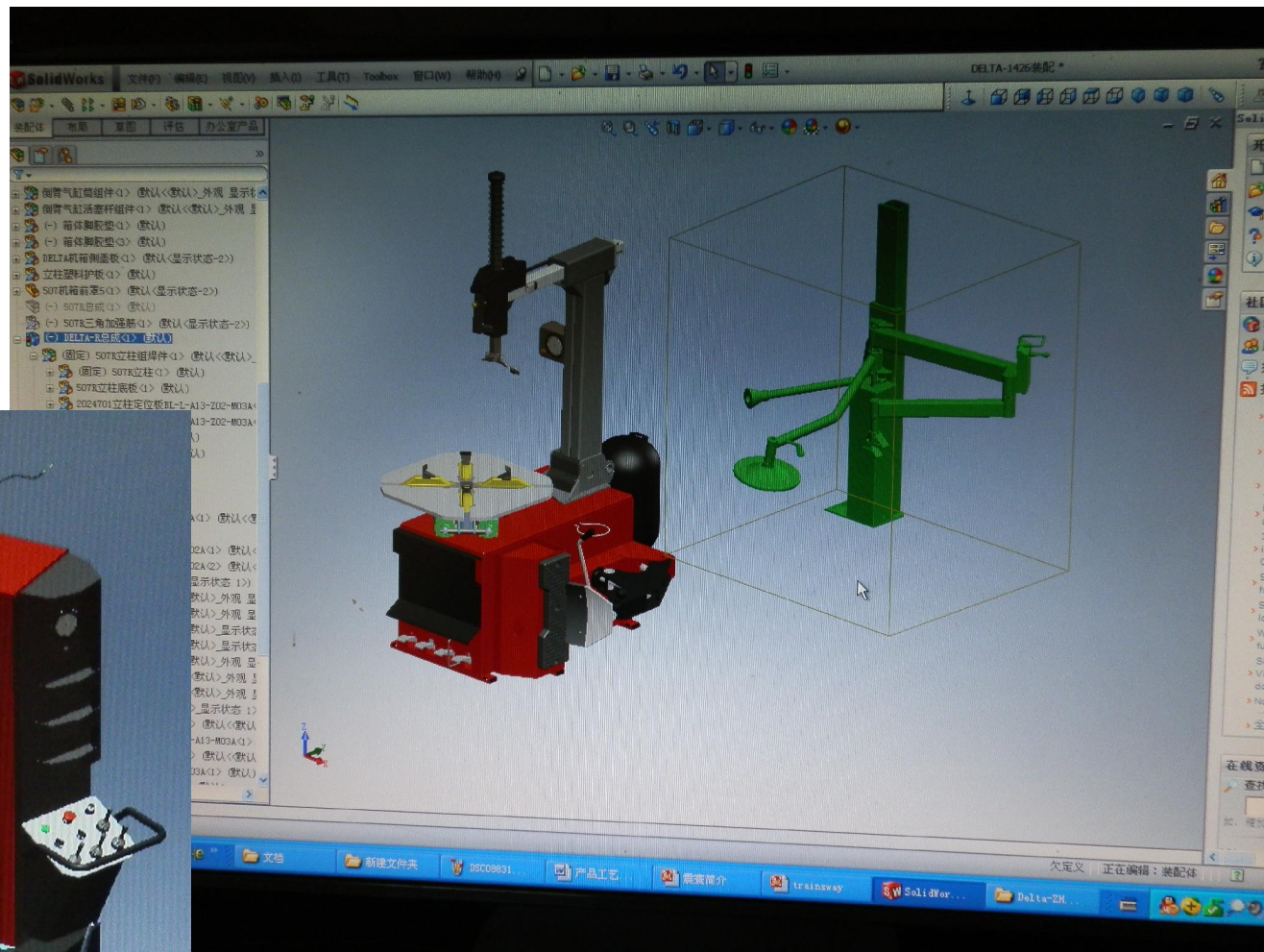
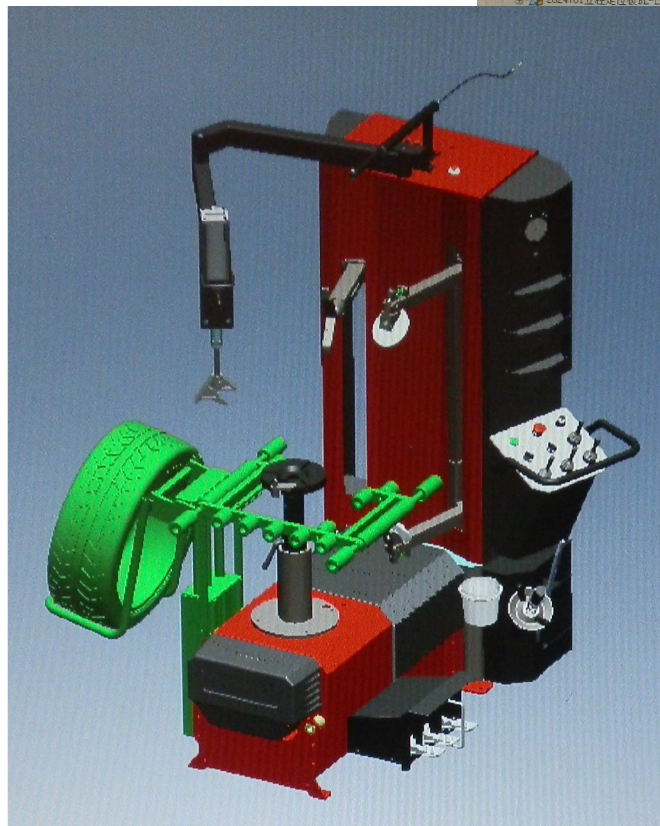
主要产品

轮胎拆装机

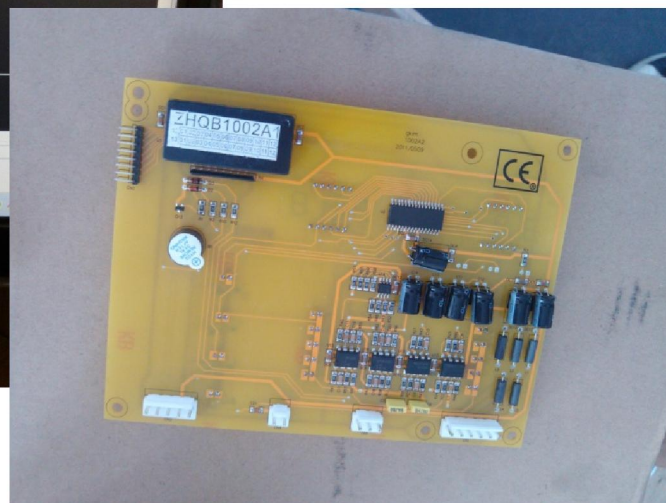
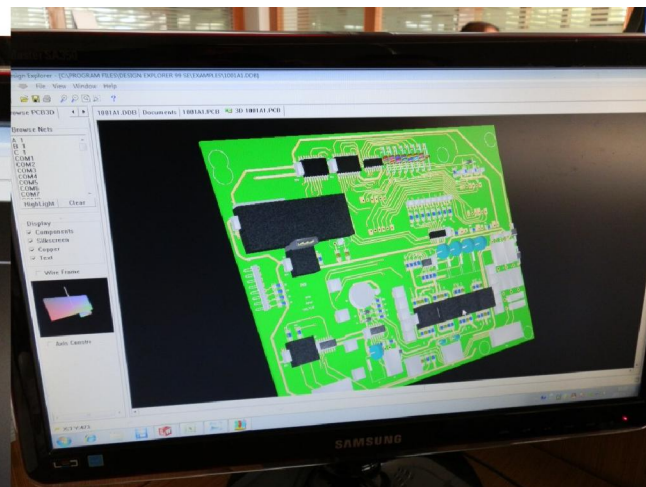
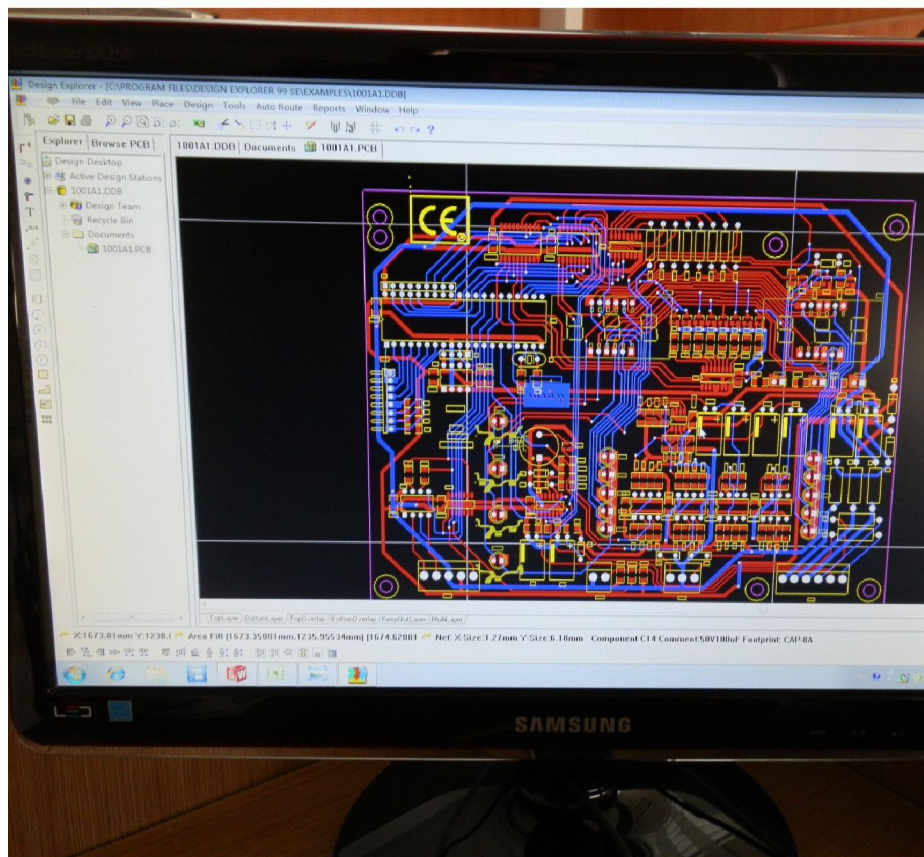


轮胎平衡机





- 技术研发:
企业拥有数位行业资深工程技术人员。自主研发生产, 轮胎拆装机从经济小机型到高端液压自动机型全覆盖, 产品开发始终与世界著名品牌同步。



技术研发:

企业拥有多名行业资深工程技术人员，软硬件自主研发。平衡机相同规格机型性能参数处于国内领先水平，并与著名大学（哈工大）长期技术合作。

其他产品



产能

车间面积: 14,967 平方米

工人数量: 81 人

月产量: 1000 套

剪板



折弯



机械加工



机械加工





焊接



喷涂

焊接工装





轮胎拆胎机装配

轮胎平衡机装配



生产控制表，质量责任可追溯到个人

TRAINSWAY

供应商样品检验报告

供应商名称: 肇庆利和机械		电话:	
送样数量: 2		日期: 2012年8月22日	
零件名称: 解轮轴		图号: BL502-A05-M03A	
编码: 2009401			
序号	图纸尺寸	样品1	样品2
1	$\phi 40 (+0.015/-0)$ A	40.013	40.005
2	$\phi 50 (+0.25/-0.1)$	49.90	49.9
3	$\phi 47 (+0.25/-0)$	46.8	46.85
4	$\phi 50 (+0.02/-0)$	50.05	50.05
5	基准A 同轴度 $\phi 0.02$	未测	未测
6	$\phi 50 (+0.015/-0)$	50.05	50.05
7	基准A 同轴度 $\phi 0.02$	未测	未测
8	$\phi 50 (+0.15/-0.08)$	49.95	49.87
9	圆跳度 6°	5.40	5.12
10	圆跳动 0.02	未测	未测
11	$52 (+0.12/-0)$	51.8	51.74
12	$90 (+0.3/-0.2)$	89.7	89.81
13	$2.2 (+0.12/-0)$	2.3	2.47
14	$129.5 (\pm 0.1)$	129.5	129.6
15	$59.5 (+0.2/-0)$	60.20	59.97
16	50.2	50.3	50.16
17	42	43	43
18	2-95深12	10	10
19	与键槽的角度	90°	90°
20	M16深40	39	38
21	键槽宽 12	12.04	12.06
22	键槽深度尺寸 45	44.6	44.46
检测结论: 零件同图, 重要尺寸合格, 未测因尺寸超差需改善.			
检测人: 徐波			
时间: 2012.8.22			

新装机装配作业表

生产编号: 1203042

序号	名称	责任人签字	完成时间	备注	参数
1	大盘总成	刘忠志	2012.9.10	电压:	502F
2	解件装配	李强	2012.9.11		
3	主机装配	刘小华	9.12	颜色: <input type="checkbox"/> 红色 <input type="checkbox"/> 蓝色	
4	辅助臂装配	李强	9.12	<input type="checkbox"/> 蓝+灰 <input type="checkbox"/> 其它	
5	整机调试	李强	9.12	电压: <input type="checkbox"/> 110V/60Hz	
6	贴标签铭牌	李强	9.12	配220V/50Hz <input type="checkbox"/> 380V/50Hz	
7	配件清单	陈强	9.12	颜色: <input type="checkbox"/> 灰色 <input type="checkbox"/> 白色 <input type="checkbox"/> 黑色	
8	品质检验	徐波	2012.9.13	<input type="checkbox"/> 工业 <input type="checkbox"/> 无油 <input type="checkbox"/> 其它	
9	包装	王志刚	2012.9.14	包装: <input type="checkbox"/> 常规包装 <input type="checkbox"/> 小包装 <input type="checkbox"/> 整体包装	

拆装机装配作业表

生产编号: 1210368

序号	名称	责任人签字	完成时间	备注	参数
1	大盘总成	刘忠志	2012.10.15	电压:	505F
2	解件装配	李强	10.15		
3	主机装配	刘小华	10.20	颜色: <input type="checkbox"/> 红色 <input type="checkbox"/> 蓝色	
4	辅助臂装配	李强	2012.10.20	<input type="checkbox"/> 蓝+灰 <input type="checkbox"/> 其它	
5	整机调试	李强	2012.10.20	电压: <input type="checkbox"/> 110V/60Hz	
6	贴标签铭牌	李强	10.20	配220V/50Hz <input type="checkbox"/> 380V/50Hz	
7	配件清单	陈强	9.12	颜色: <input type="checkbox"/> 灰色 <input type="checkbox"/> 白色 <input type="checkbox"/> 黑色	
8	品质检验	徐波	2012.10.21	<input type="checkbox"/> 工业 <input type="checkbox"/> 无油 <input type="checkbox"/> 其它	
9	包装	王志刚	2012.10.22	包装: <input type="checkbox"/> 常规包装 <input type="checkbox"/> 小包装 <input type="checkbox"/> 整体包装	

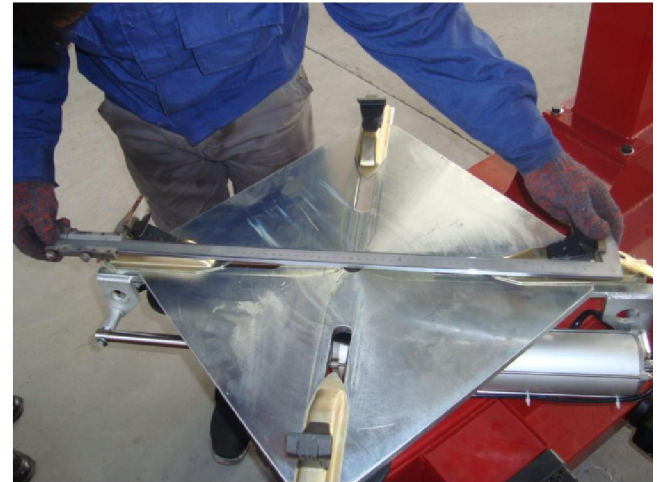
平衡机装配作业表

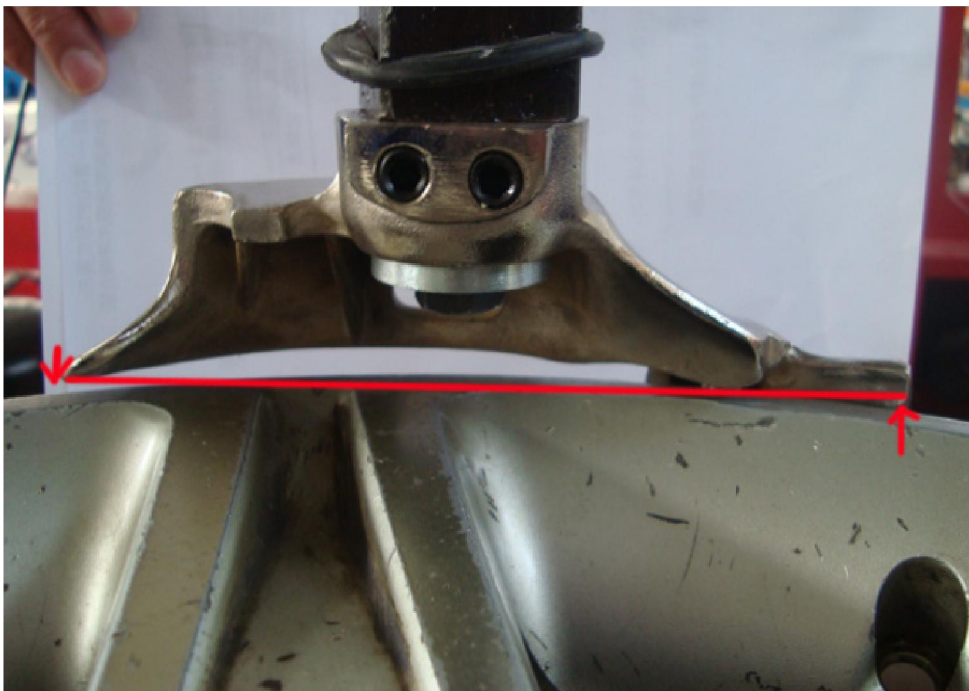
生产编号: 1210352

序号	名称	责任人签字	完成时间	备注	参数
1	大盘总成	刘忠志	2012.10.12	电压:	505F
2	解件装配	李强	2012.10.15		
3	主机装配	刘小华	2012.10.17	颜色: <input type="checkbox"/> 红色 <input type="checkbox"/> 蓝色	
4	辅助臂装配	李强	2012.10.17	<input type="checkbox"/> 蓝+灰 <input type="checkbox"/> 其它	
5	整机调试	李强	2012.10.17	电压: <input type="checkbox"/> 110V/60Hz	
6	贴标签铭牌	李强	2012.10.17	配220V/50Hz <input type="checkbox"/> 380V/50Hz	
7	配件清单	陈强	9.12	颜色: <input type="checkbox"/> 灰色 <input type="checkbox"/> 白色 <input type="checkbox"/> 黑色	
8	品质检验	徐波	2012.10.21	<input type="checkbox"/> 工业 <input type="checkbox"/> 无油 <input type="checkbox"/> 其它	
9	包装	王志刚	2012.10.22	包装: <input type="checkbox"/> 常规包装 <input type="checkbox"/> 小包装 <input type="checkbox"/> 整体包装	



- 卡爪的对称度
检验





平行度检验



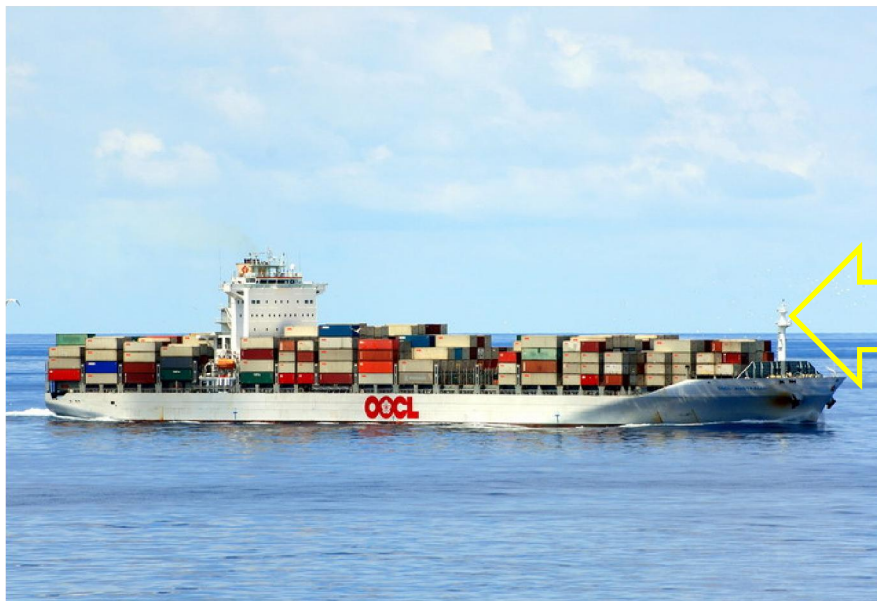
垂直度检验



检验



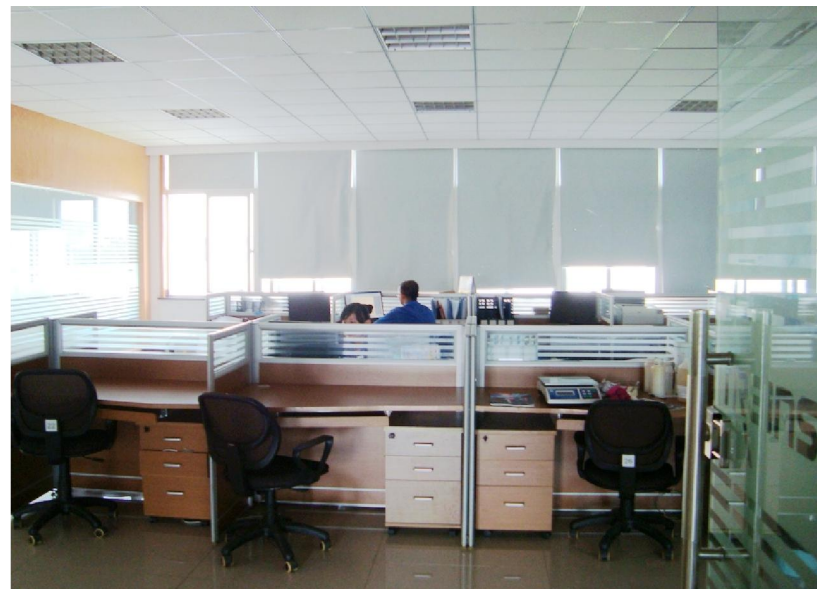
包装



运输



装箱



办公室



样品室

上海法兰克福汽配展



德国法兰克福汽配展



欧盟CE证书



**ISTITUTO
GIORDANO**

Istituto Giordano S.p.A.

Headquarters

Via Rossini, 2 - 47814 Bellaria-Igea Marina (RN) - Italy
Tel. 0039-0541-343030 - Fax 0039-0541-345540
Info@iggiordano.it - www.giordano.it

Shanghai Representative Office

Rm. 2703a, Yuyuan Rd., No.172 - Shanghai, China 200040
Tel: 0086-21-32140386 - Fax: 0086-21-62487098
info@igchina.com - www.igchina.com

MEMBERSHIP OF INTERNATIONAL SOCIETIES / PARTECIPAZIONI ASSOCIATIVE

- ALPI - Association of Independent Test Laboratories.
- ASHRAE - American Society of Heating, Refrigerating and Air Conditioning Engineers Inc.
- ASTM - American Society for Testing and Materials.
- EARM - Research Association for Managers and Administrators.
- EARTO - European Association of Research and Technology Organisations.
- EGOLF - European Group of Official Laboratories for Fire Testing.
- ICM (Mechanics Institute of Industrial Certification) Testing of product certification schemes and releases the "ICM Mark".
- IFI (Institut für Feststofftechnik e.V.) Laboratory testing, and surveillance at company on product certification procedures for the release of the "IFI-KIS" Quality Mark on burglar-resistance doors.
- ILAC - International Laboratory Accreditation Cooperation.
- IMD (Institute of Quality Marking): Testing of certification schemes for the end product and releases the "IMD-CIS Quality Mark" on fuses.
- KEYMARK for thermal insulation (www.keymark.org): Authorisation dated 05/07/02, con- ceded by SGS for measurement of thermal conductivity within voluntary product certifica- tion programme CEN KEYMARK for insula- tion materials.

CLAUSES

Any modifications made to the models without Istituto Giordano S.p.A. approval could invali- date the certificate. This document refers only to the above Directives. For the purpose of the CE marking, the products might have to com- ply with other applicable European Directives. This document is issued on the basis of a vol- untary request. Partial reproduction of this document is allowed only with Istituto Giordano S.p.A. written approval.

CLAUSOLE

Qualsiasi modifica apportata ai modelli senza approvazione dell'Istituto Giordano S.p.A. po- trebbe invalidare l'attestato. Questo documen- to si riferisce unicamente alle Direttive citate. Altre Direttive Europee potrebbero essere ap- plicabili per la marcatura CE. Il presente docu- mento è emesso su base volontaria e non può essere riprodotto parzialmente, salvo ap- provazione scritta di Istituto Giordano S.p.A.

CERTIFICATE OF CONFORMITY

ATTESTATO DI CONFORMITÀ

No. 47653/1314/C

Contract No. CHIG09121394

This is to declare that the technical file of the products identified below complies with the essential requirements of European Directives 2006/42/EC (MD) and 2006/95/EC (LVD).
Il presente documento attesta che il fascicolo tecnico dei prodotti identificati di seguito è in conformità con i requisiti essenziali delle Direttive Europee 2006/42/EC (MD) e 2006/95/EC (LVD).

Description/Descrizione:

TYRE CHANGER

Models/Modelli:

BL501, BL502, BL503, BL504, BL505, BL506

Reference standards/Norme di riferimento:

EN ISO 12100-1:2003 + A1:2009,

EN ISO 12100-2:2003 + A1:2009,

EN 60204-1:2006

Applicant/Richiedente:

ZHEJIANG ZHENHUAN AUTOMOBILE SERVICE EQUIPMENT CO., LTD.

Address/Indirizzo:

**No. 238, Si Hua Road, Qi Xing Du Shi Jing Ji Yuan, Jia Xing City,
P. R. China**

According to the procedures established by European Directives 2006/42/EC (MD) and 2006/95/EC (LVD), the Applicant can proceed with the CE marking of the above mentioned products signing the declaration of conformity and affixing the following symbol

In base alle procedure stabilite dalle Direttive Europee 2006/42/EC (MD) e 2006/95/EC (LVD), il richiedente può procedere alla marcatura CE dei prodotti citati firmando la dichiarazione di conformità ed apponendo il seguente simbolo



Place and date of issue
Luogo e data di emissione
Bellaria-Igea Marina, Italy
11 February 2010

EC Directives Division Director
Direttore Divisione Direttive Europee
Dott. Ing. Giuseppe Persano Adorno

Giuseppe Persano Adorno

Chief Executive Officer
L'Amministratore Delegato
Dott. Ing. Vincenzo Iommi

Vincenzo Iommi

This document consists of 2 sheets/Questo documento è composto da n. 2 fogli.

Sheet No. 1 of 2

ISTITUTO GIORDANO S.p.A.
Cod. Fisc./Part. IVA: 00 549 540 409
R.E.A. cap C.C.I.A.A. (RN) 156768
Registro Imprese di Rimini n. 05548540409
Cap. Soc. € 1.500.000 I.V.



**ISTITUTO
GIORDANO**

Istituto Giordano S.p.A.

Headquarters

Via Rossini, 2 - 47814 Bellaria-Igea Marina (RN) - Italy
Tel. 0039-0541-343030 - Fax 0039-0541-345540
Info@iggiordano.it - www.giordano.it

Shanghai Representative Office

Rm. 2703a, Yuyuan Rd., No.172 - Shanghai, China 200040
Tel: 0086-21-32140386 - Fax: 0086-21-62487098
info@igchina.com - www.igchina.com

MEMBERSHIP OF INTERNATIONAL SOCIETIES / PARTECIPAZIONI ASSOCIATIVE

- ALPI - Association of Independent Test Laboratories.
- ASHRAE - American Society of Heating, Refrigerating and Air Conditioning Engineers Inc.
- ASTM - American Society for Testing and Materials.
- EARM - Research Association for Managers and Administrators.
- EARTO - European Association of Research and Technology Organisations.
- EGOLF - European Group of Official Laboratories for Fire Testing.
- ICM (Mechanics Institute of Industrial Certification) Testing of product certification schemes and releases the "ICM Mark".
- IFI (Institut für Feststofftechnik e.V.) Laboratory testing, and surveillance at company on product certification procedures for the release of the "IFI-KIS" Quality Mark on burglar-resistance doors.
- ILAC - International Laboratory Accreditation Cooperation.
- IMD (Institute of Quality Marking): Testing of certification schemes for the end product and releases the "IMD-CIS Quality Mark" on fuses.
- KEYMARK for thermal insulation (www.keymark.org): Authorisation dated 05/07/02, con- ceded by SGS for measurement of thermal conductivity within voluntary product certifica- tion programme CEN KEYMARK for insula- tion materials.

CLAUSES

Any modifications made to the models without Istituto Giordano S.p.A. approval could invali- date the certificate. This document refers only to the above Directives. For the purpose of the CE marking, the products might have to com- ply with other applicable European Directives. This document is issued on the basis of a vol- untary request. Partial reproduction of this document is allowed only with Istituto Giordano S.p.A. written approval.

The validity of this document is 5 years from the date of issue. The document loses its va- lidity in case the reference standards is/are modified.

CLAUSOLE

Qualsiasi modifica apportata ai modelli senza approvazione dell'Istituto Giordano S.p.A. po- trebbe invalidare l'attestato. Questo documen- to si riferisce unicamente alle Direttive citate. Altre Direttive Europee potrebbero essere ap- plicabili per la marcatura CE. Il presente docu- mento è emesso su base volontaria e non può essere riprodotto parzialmente, salvo ap- provazione scritta di Istituto Giordano S.p.A. La validità di questo documento è di 5 anni dalla data di emissione. Il documento non è più valido in caso di variazione delle/loro norme di riferimento.

CERTIFICATE OF CONFORMITY

ATTESTATO DI CONFORMITÀ

No. 47802/1315/C

Contract No. CHIG09121395

This is to declare that the technical file of the products identified below complies with the essential requirements of European Directives 2006/42/EC (MD) and 2006/95/EC (LVD).
Il presente documento attesta che il fascicolo tecnico dei prodotti identificati di seguito è in conformità con i requisiti essenziali delle Direttive Europee 2006/42/EC (MD) e 2006/95/EC (LVD).

Description/Descrizione:

TYRE BALANCER

Models/Modelli:

SBM96A, SBM96B, SBM99, SBM95, SBM200

Reference standards/Norme di riferimento:

EN ISO 12100-1:2003 + A1:2009,

EN ISO 12100-2:2003 + A1:2009,

EN 60204-1:2006

Applicant/Richiedente:

ZHEJIANG ZHENHUAN AUTOMOBILE SERVICE EQUIPMENT CO., LTD.

Address/Indirizzo:

**No. 238, Si Hua Road, Qi Xing Du Shi Jing Ji Yuan, Jia Xing City,
P. R. China**

According to the procedures established by European Directives 2006/42/EC (MD) and 2006/95/EC (LVD), the Applicant can proceed with the CE marking of the above mentioned products signing the declaration of conformity and affixing the following symbol

In base alle procedure stabilite dalle Direttive Europee 2006/42/EC (MD) e 2006/95/EC (LVD), il richiedente può procedere alla marcatura CE dei prodotti citati firmando la dichiarazione di conformità ed apponendo il seguente simbolo



Place and date of issue
Luogo e data di emissione
Bellaria-Igea Marina, Italy
23 February 2010

EC Directives Division Director
Direttore Divisione Direttive Europee
Dott. Ing. Giuseppe Persano Adorno

Giuseppe Persano Adorno



Chief Executive Officer
L'Amministratore Delegato
Dott. Ing. Vincenzo Iommi

Vincenzo Iommi

*This document consists of 2 sheets/Questo documento è composto da n. 2 fogli.

Sheet No. 1 of 2

ISO9001质量管理体系认证证书

DIRECT ASSESSMENT SERVICES	
	Quality Management System Certificate of Approval
	<i>This is to certify that the Quality Management System of</i>
	Zhejiang Zhenhuan Automobile Service Equipment Co., Ltd.
	No.238, Si Hua Jing Rd., Qixing Du Shi Jing Ji Yuan, Jiaxing City, Zhejiang Province, China
	<i>Has been assessed and found to meet the requirements of</i>
	ISO 9001:2000
	Manufacture and Sale of Tire Changer, Wheel Balancer and other Automobile Service Equipments
	Certificate Number: Q31081118
	Date of Issue: 07, November, 2008
Valid until: 06, November, 2011	
Authorized by: 	
Senior Executive	
	
Surveillance Audits	
	
	
	
Registered ISO 9001:2000	
	
127	
DAS Certification Ltd., Company Number: 3384526, 1 Wellington, Close, Horndean, Hampshire PO8 0UR UK China HQ: Shanghai DAS Certification Co., Ltd. Address: 14A, Tower A, Victoria Plaza, No.1068 Xikang Road, Shanghai, P.R. China Zip Code: 200060 Tel: 0086-21-62773910 Fax: 0086-21-62773343 http://www.das-china.com	



谢谢收看